



# TPDIN-CB-100A-2P

## DATA SHEET

### 500V 100A 2 Pole Circuit Breaker

#### Features

- DC DIN Mount Circuit Breaker
- Rated for up to 500VDC @ 100A
- Mechanical life >10,000 Cycles

#### Applications

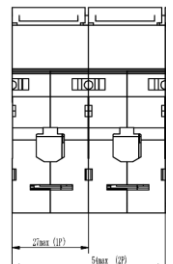
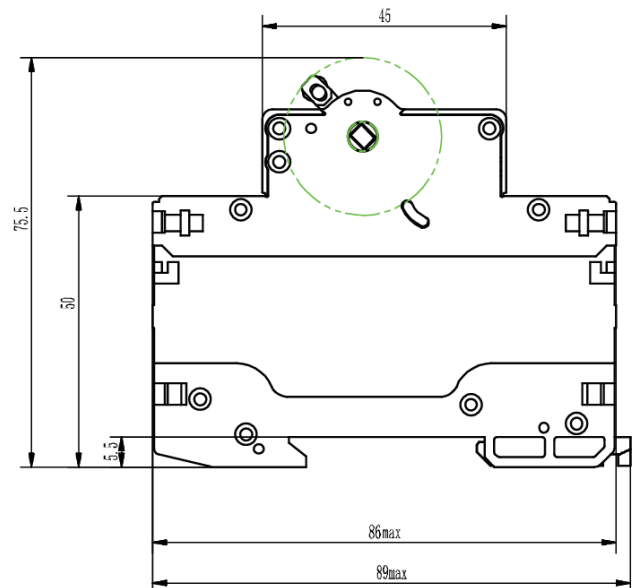
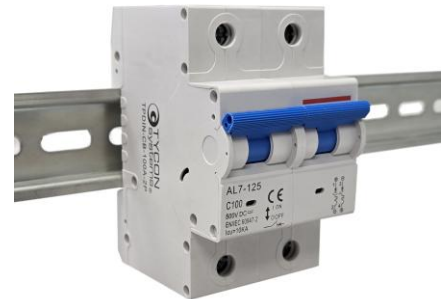
- Remote Power Systems
- Solar Power Applications

#### Description

The Tycon Solar® TPDIN-CB-100A-2P is DIN Rail mount miniature circuit breaker designed for DC systems such as remote power and solar systems. With its 500V and 100A trip point these will find many uses in battery and solar panel disconnect switches in addition to overload protection.

#### Specifications

<b>Rated Trip Current</b>	100A
<b>Trip Type</b>	Thermal Magnetic
<b>Rated Voltage @ Current</b>	500 VDC @ 100A
<b>Insulation Voltage</b>	1000V
<b>Impulse Voltage</b>	6kV
<b>Short Circuit Trip Current</b>	10kA Max
<b>Mechanical Life</b>	>10,000 Cycles
<b>Electrical Life</b>	>1500 Break Cycles
<b>Terminal Wire Size (Max)</b>	9mm Diameter, 0 AWG
<b>Fastening Torque</b>	2.0 ~ 3.5 Nm (1.5 ~ 2.5 ft lb)
<b>Environmental Protection</b>	IP40
<b>Relative Humidity</b>	<95%
<b>Vibration</b>	IEC60069-2-6
<b>Shock</b>	IEC60068-2-27
<b>Certifications</b>	CE, RoHS
<b>Operating Temp</b>	-30°C to 70°C (-22°F to 158°F)
<b>Max Storage Temperature</b>	85°C (185°F)
<b>Dimensions (L x H x W)</b>	86 x 75.5 x 54mm (3.4 x 3 x 2.1")
<b>Weight</b>	240g (0.53lb )
<b>Warranty</b>	3 years



#### System Ordering:

TPDIN-CB-100A-2P 500VDC 100A 2 Pole Circuit Breaker

For further information contact: [Tyconsystems.com](http://Tyconsystems.com)



930 W 14600 S Ste 600  
Bluffdale, UT 84065  
PH: 801-432-0003  
FAX: 801-618-4220